

PINE WEEVIL

(Hylobius abietis)

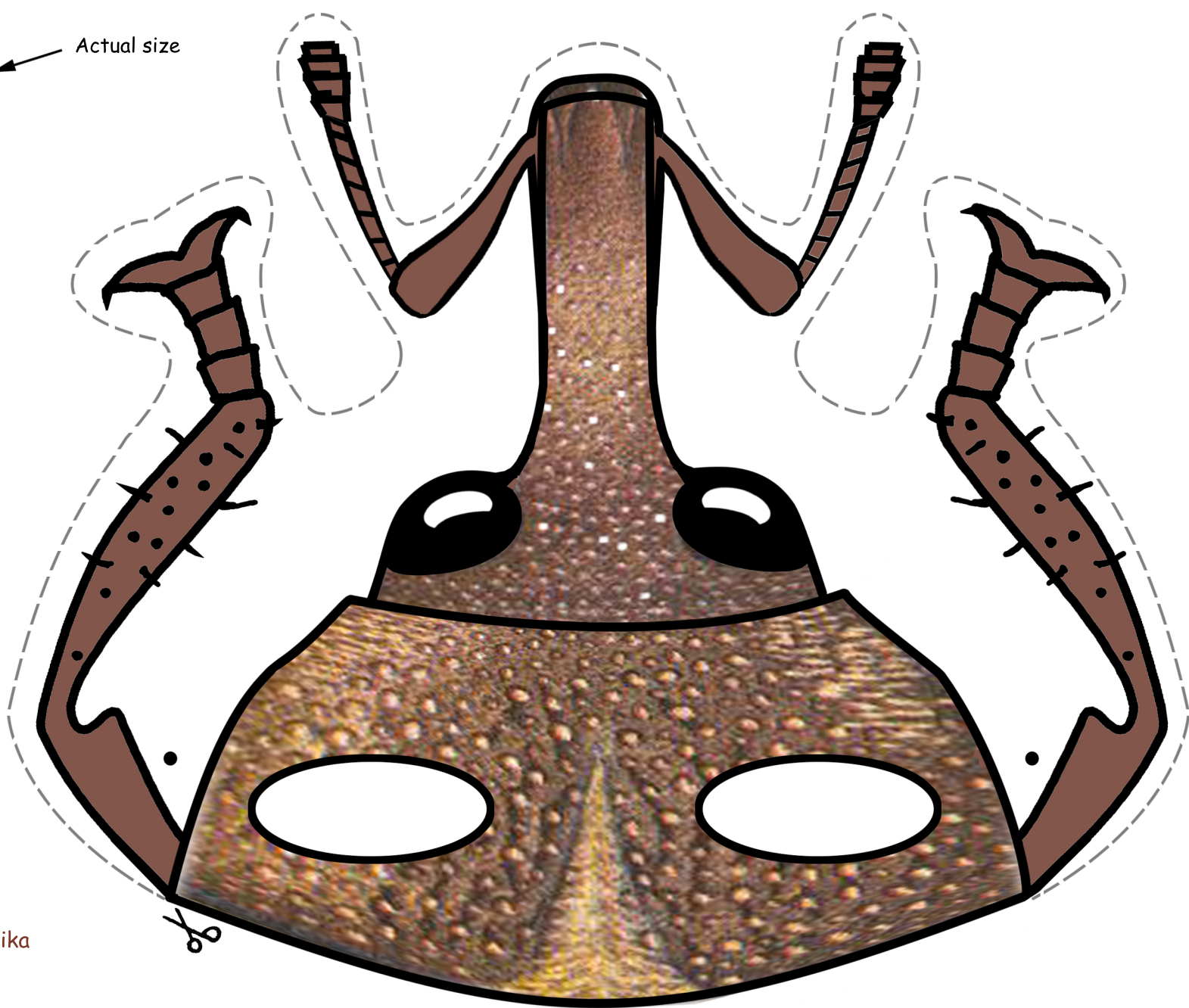


Actual size

Pine weevil is a beetle eating into the root necks mainly of newly planted pine trees. The beetle likes to gnaw at young spruce trees too. Wounded young trees then grow crooked and die if the damage is heavy. In order to protect small transplants against the pine weevil, foresters soak them in a liquid, which smells and tastes badly to the beetles. Another way to protect the young plants is removal of stumps because the beetles develop in fresh stumps.

FOREST PROTECTION - THE FOREST THAT IS USEFUL TO EVERYBODY

What more should be told to children about the discipline of forest protection? Go to www.lesnipedagogika.cz



www.lesnipedagogika.cz



www.facebook.com/lesnipedagogika



[www.twitter.com/ForestPedCZ](https://twitter.com/ForestPedCZ)



www.uhul.cz | Information on Czech Forests

TEACHING AID WITH THE THEME OF FOREST PROTECTION

Issued by Forest Management Institute, Czech Republic © 2015